

Oral Reading Expert Sheets **44-B**

The Hardly Mansion

Joyce Hardly and her husband /O/li/ver owned the oldest of the five mansions in this land. These foremost estates remain /un/da/maged. /To/ge/ther they reflect our history and recount the daily lives of those olden times. In the main house one can still see the Hardly's tools, garments, tables and chairs. You can see entire rooms that are intact and date back to 1500. Saint Bridget's church can be seen if you gaze from the kitchen window. One can enjoy the sound of the bells ringing daily from the quaint church.



Reading Proficiency through Language Development



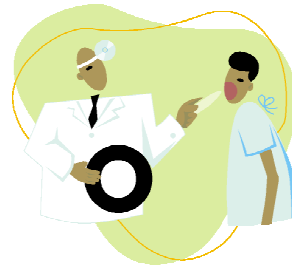
Short Vowels with Relationships

i



igloo, it

o



doctor sound

e



ed in bed

u



up

a



baby crying sound

Decoding Patterns

Long Vowels

Vowel Signals



I Go Hide
night



Policeman E

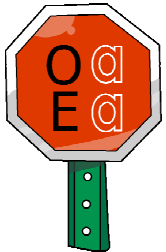


& Policeman E Twin

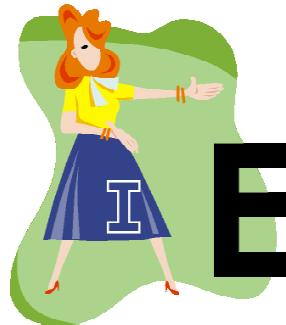


Patrol I
rain

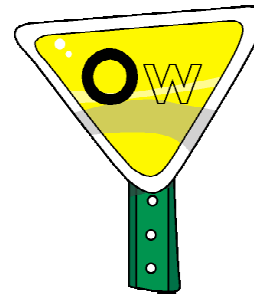
Stop Sign A



each
boat



Friendly I says E
thief



Cautious W
yellow

Detective I says
A or I - reindeer



Rule Patterns

Not Word Memorization

/c/, /k/, /ck/



cot, cat, cut

kit, keg

ck at the end tick

k at the end think

k at the end peek